

State of Wyoming Corner Record

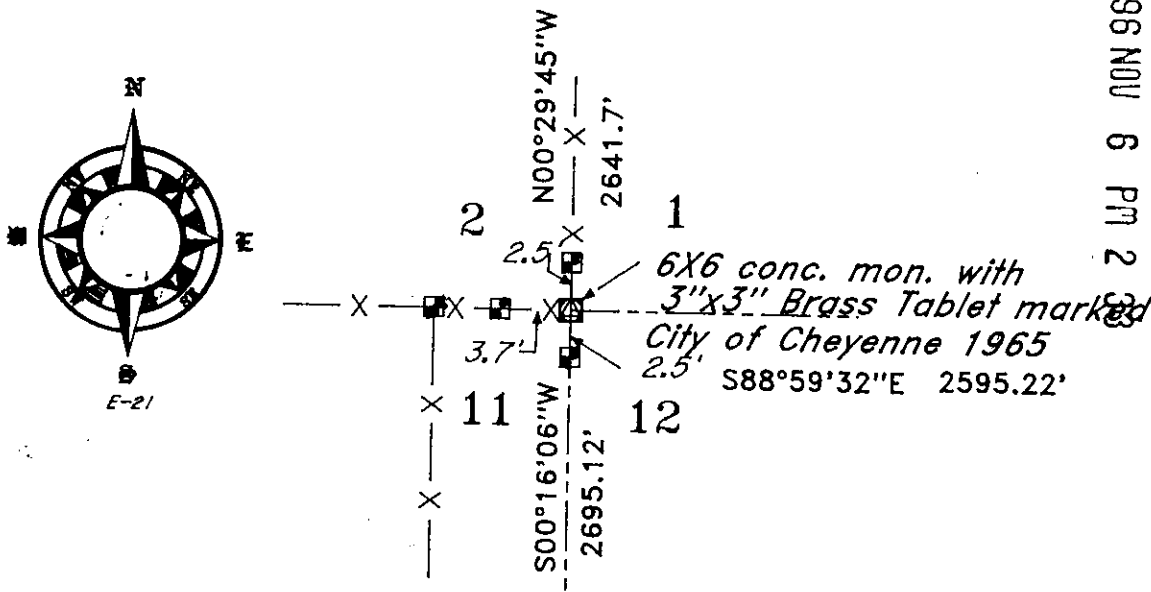
(In compliance with the CORNER PERPETUATION AND FILING ACT, Wyoming Statutes, 1977, Section 36-11-101, et, seq., and the Rules and Regulations of the Board of Registration for Professional Engineers and Professional Land Surveyors)

Reverse side of this form may be used if more space is needed.

Record of original survey and citation of source of historical information (if corner is lost or obliterated). Description of corner monumentation evidence found and/or monument and accessories established to perpetuate the location of this corner. Sketch of relative location of monument, accessories, and reference points with course and distance to adjacent corner(s) (if determined in this survey). Method and rationale for reestablishment of lost or obliterated corner.

GLO: North between Section 10 & 11 a distance of 80 chains, set sandstone 20"X9"X6".

Found Concrete Mon. as Shown hereon marked "City of Cheyenne" and marked appropriately for this corner.



192929  
 LARAMIE COUNTY CLERK  
 CHEYENNE, WY.  
 '96 NOV 6 PM 2

Date of Field Work: \_\_\_\_\_ Office Reference: \_\_\_\_\_

CROSS INDEX DIAGRAM

Firm/Agency, Address

	1	2	3	4	5	6	7	8	9	10	11	12	13	14	15	16	17	18	19	20	21	22	23	24	25	
A																										
B																										
C	6																									
D		5																								
E																										
F																										
G		7																								
H			8																							
J				9																						
K					10																					
L						11																				
M							12																			
N								13																		
O									14																	
P										15																
Q											16															
R												17														
S													18													
T														19												
U															20											
V																21										
W																	22									
X																		23								
Y																			24							
Z																				25						

Terrestrial Surveying & Mapping

P. O. Box 82

Cheyenne, WY 82003

Telephone Number: 307 634-9360

This corner record was prepared by me or under my direction and supervision.

SEAL & SIGNATURE

*Larry Perry*  
10 Nov 96

Corner Name: 21/1012 Section: 21/1112 T. 12N R. 66W P.M. Cross-Index No.: E-21